



**MASSIVHOLZHÄUSER
NEURUPPIN**

Henri Praeger

Praeger
Richter
Architekten

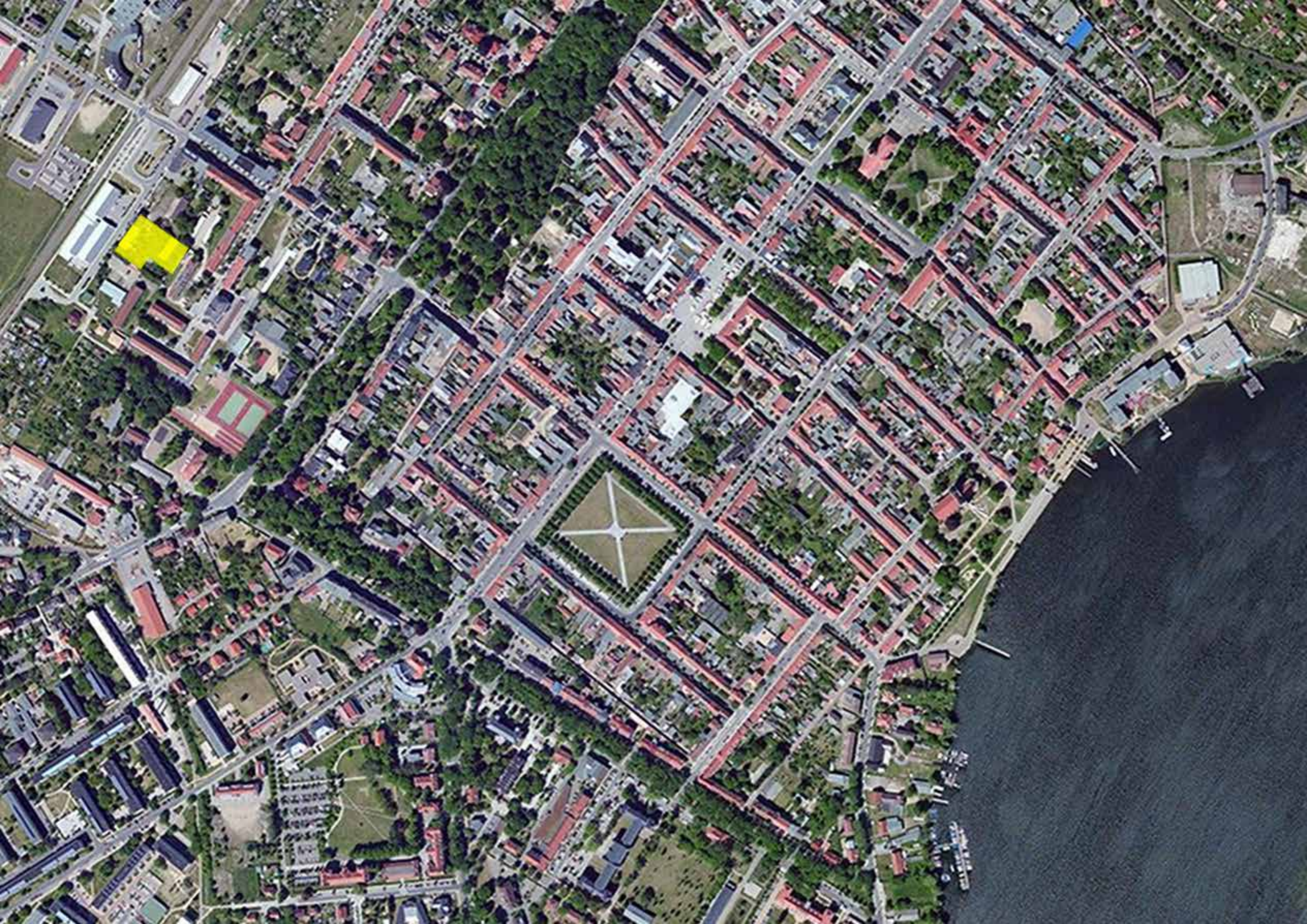


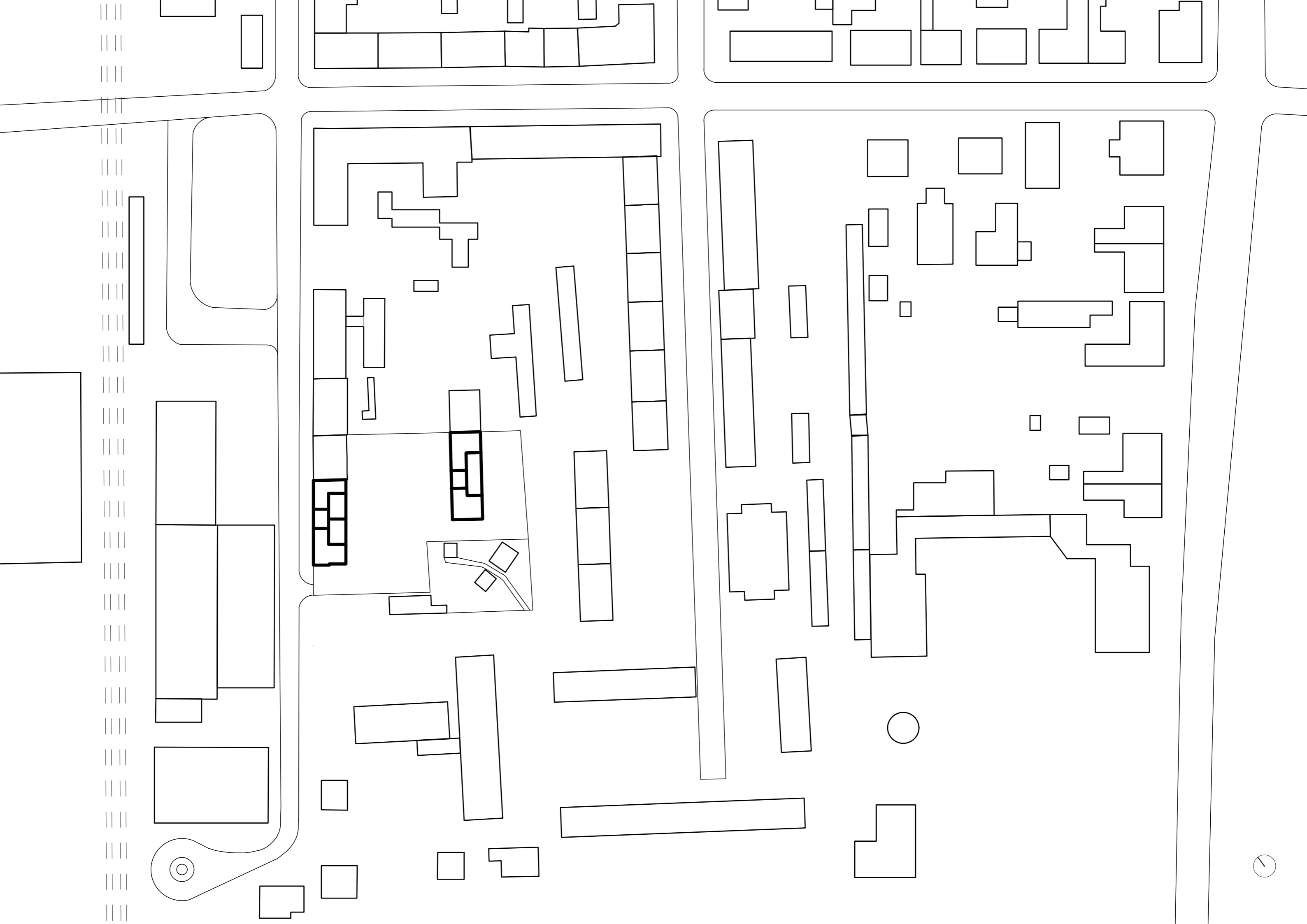
Robuste & Flexible Raumgerüste
Kostenbewusst & Ökologisch
Teilhabe & Gemeinschaft

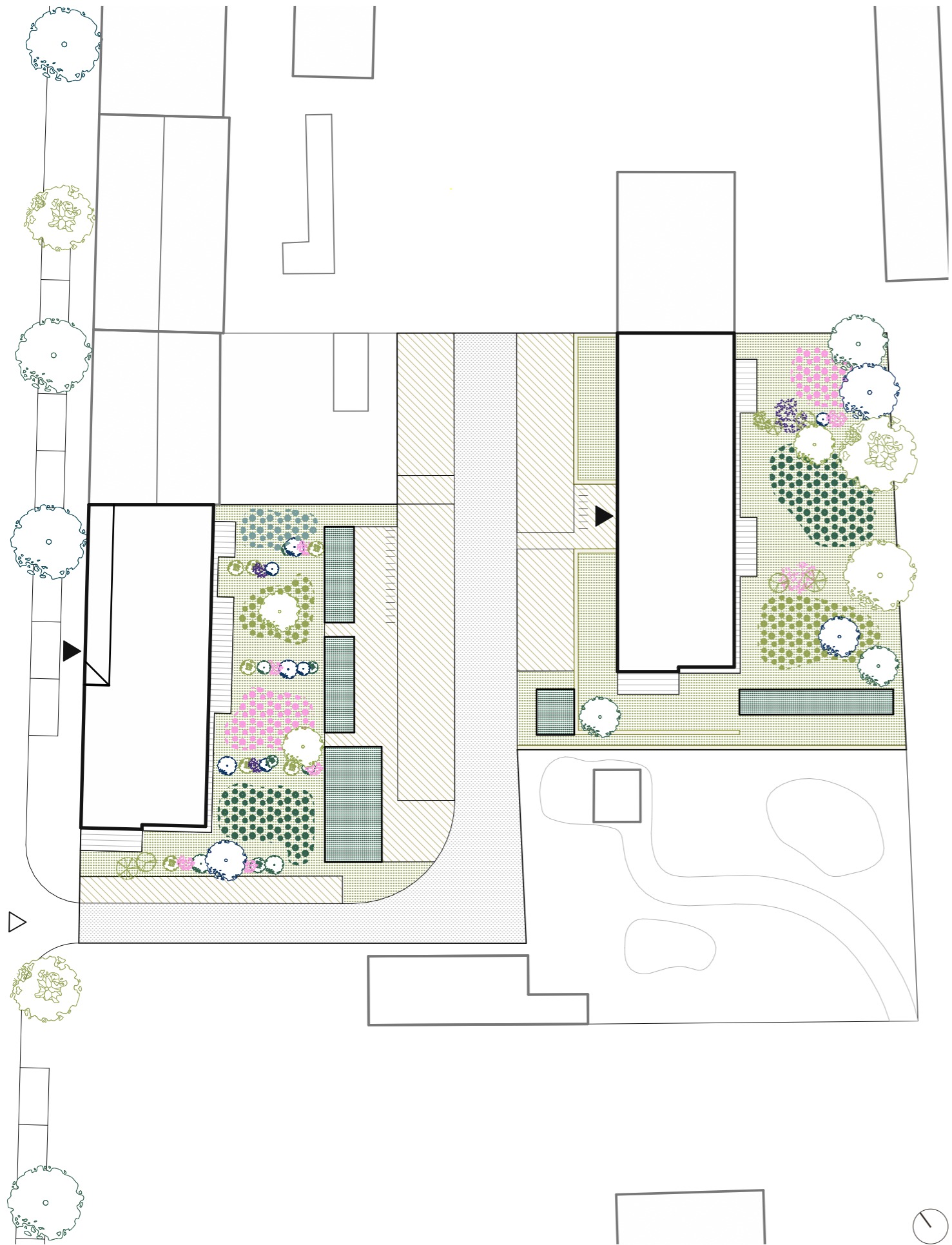
Nominiert
„DAM PREIS“
2022

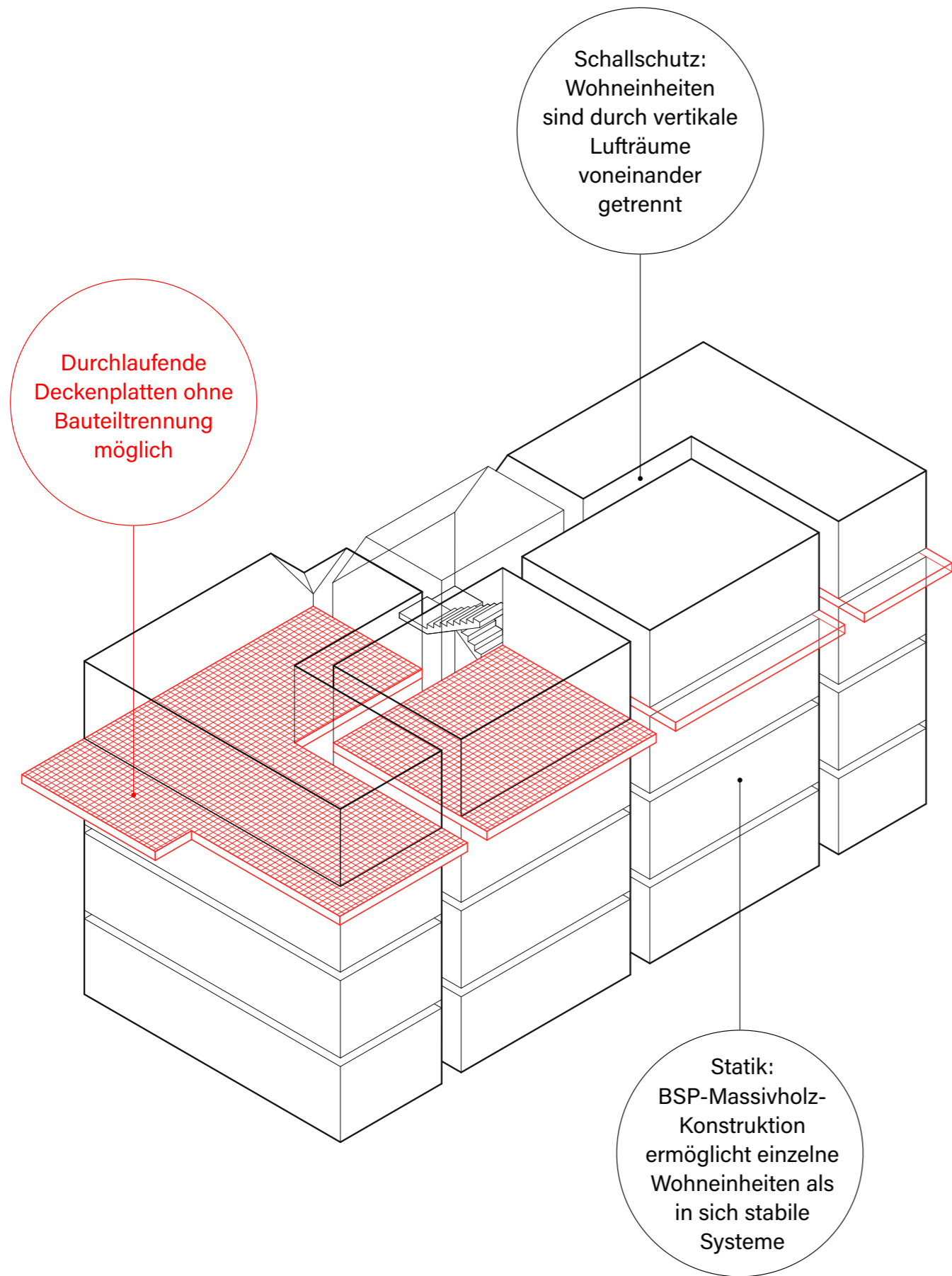
Nominiert
„Wohnbauten
des Jahres“
2022

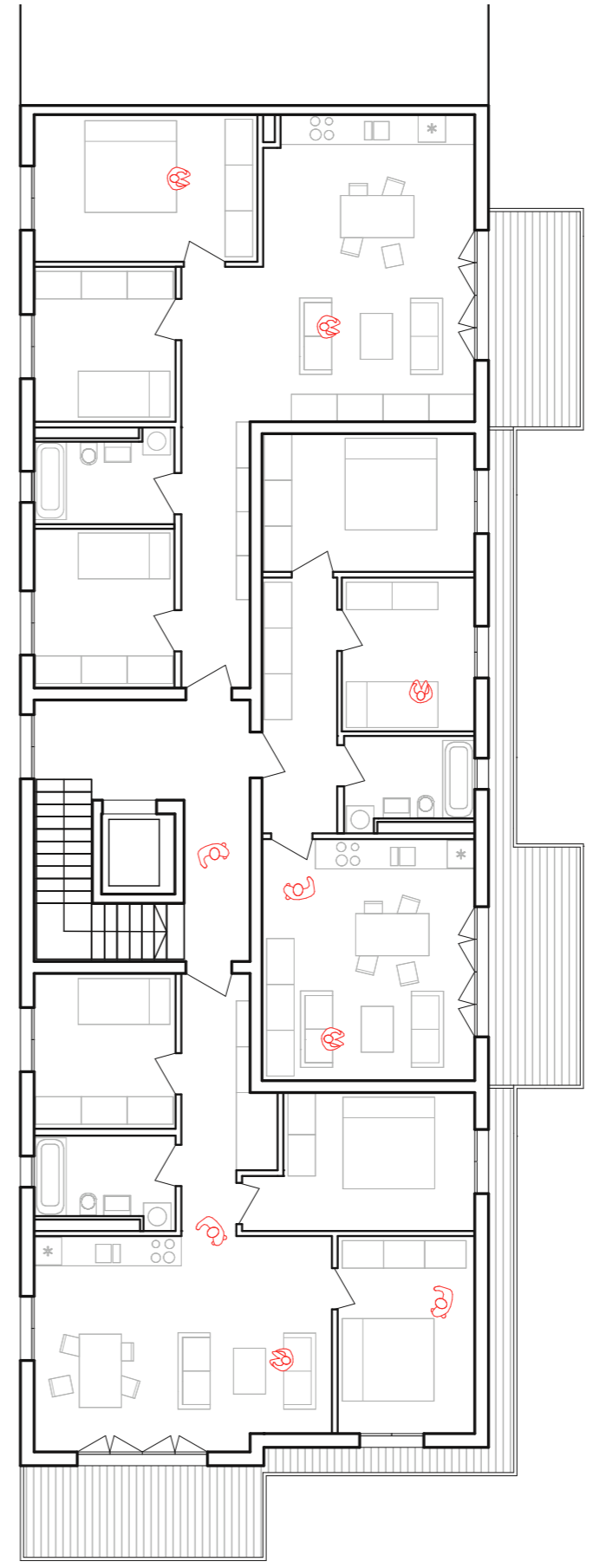
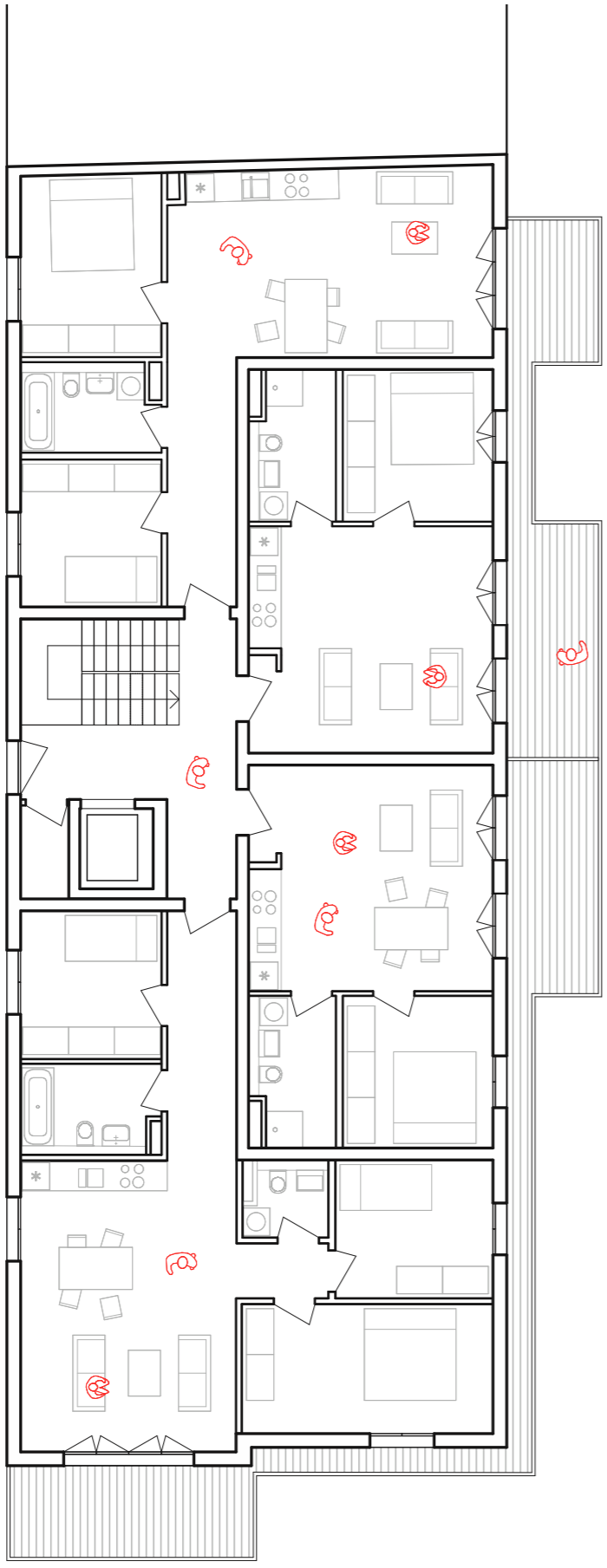


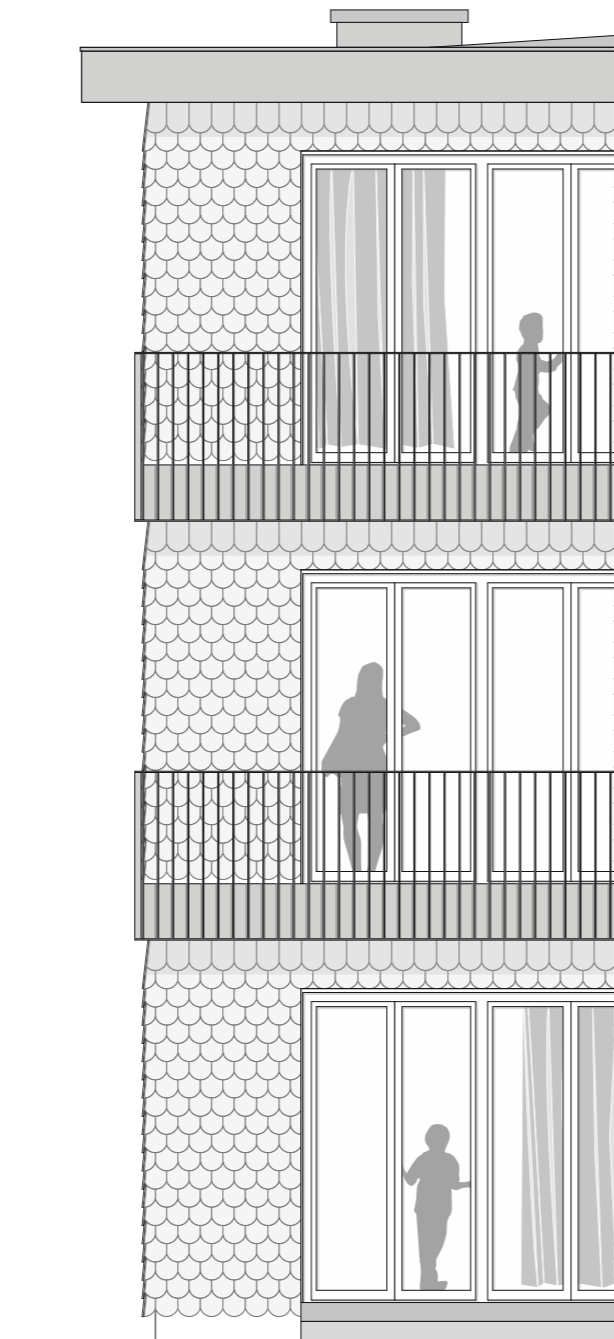
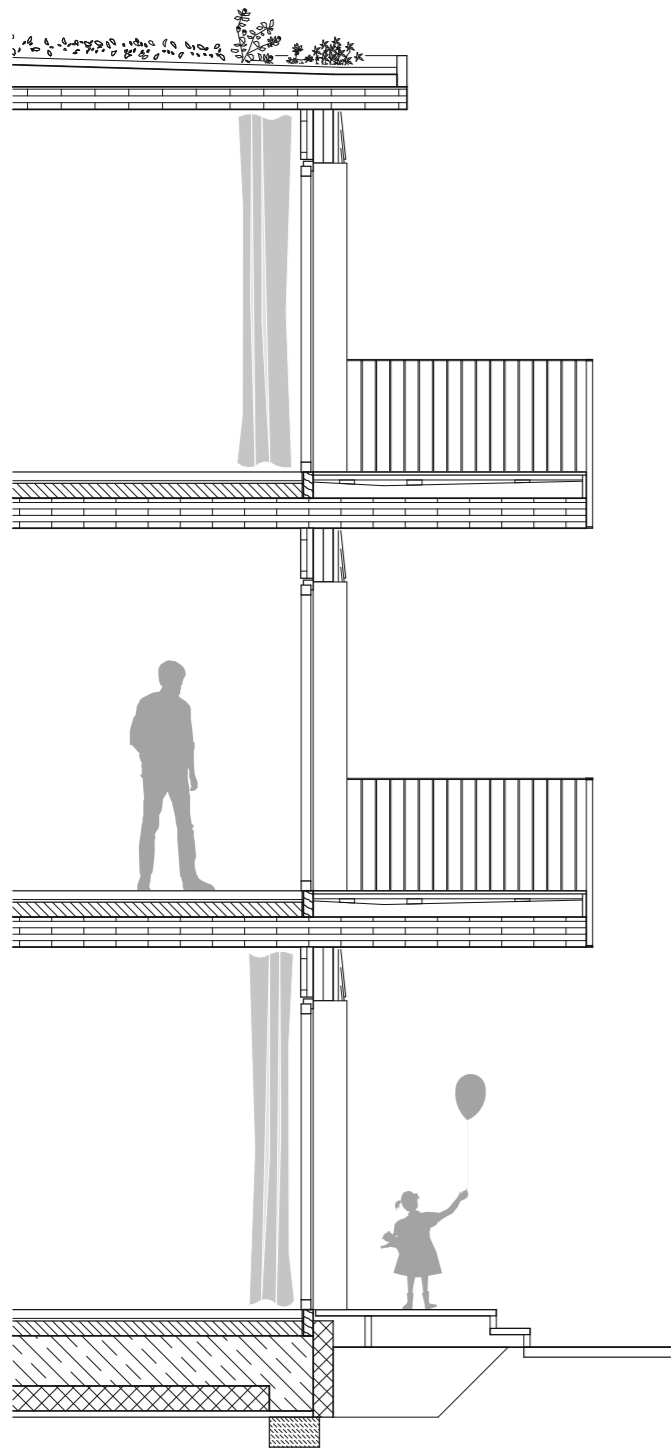




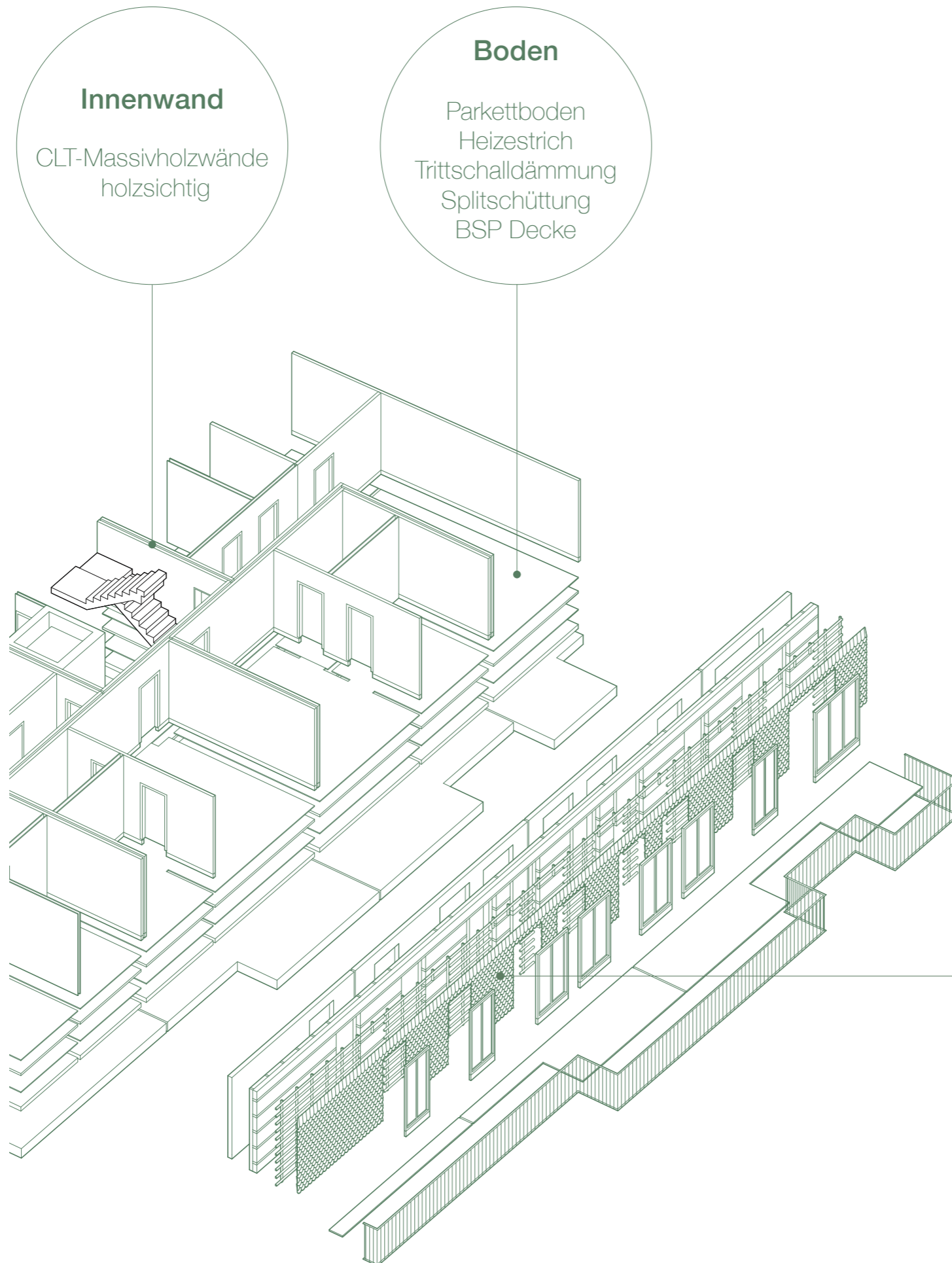












Innenwand

CLT-Massivholzwände
holzsichtig

Boden

Parkettboden
Heizestrich
Trittschalldämmung
Splitschüttung
BSP Decke

Außenwand

BSP Wänder 100 mm, 5-lagig
sichtbare Holzoberfläche in Wohnungen

Dämmung Mineralwolle 80 mm
nur eingelegt, 100% wiederverwendbar

Unterkonstruktion Fassade KVH NSI
Kantholz 80x80 mm

Biberschwanzziegel 380x155 mm
Ton, naturrot
100% wiederverwendbar

Holzfenster

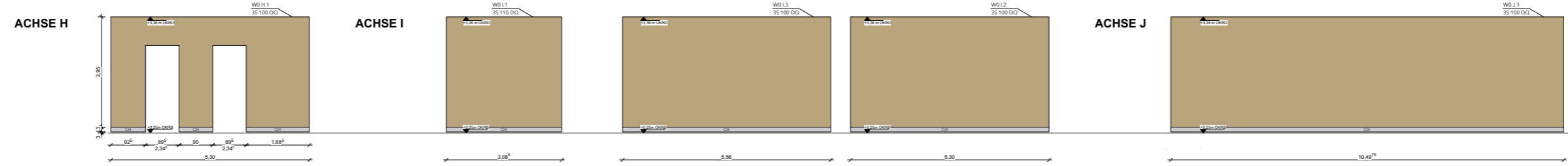
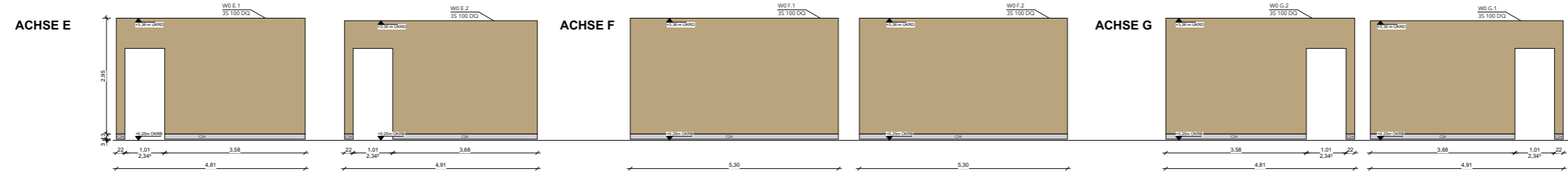
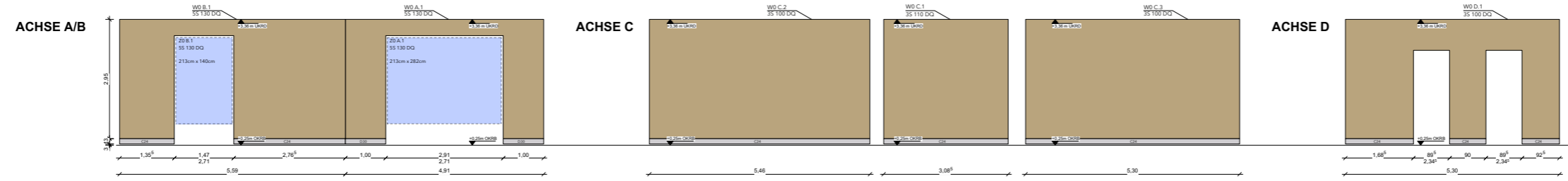
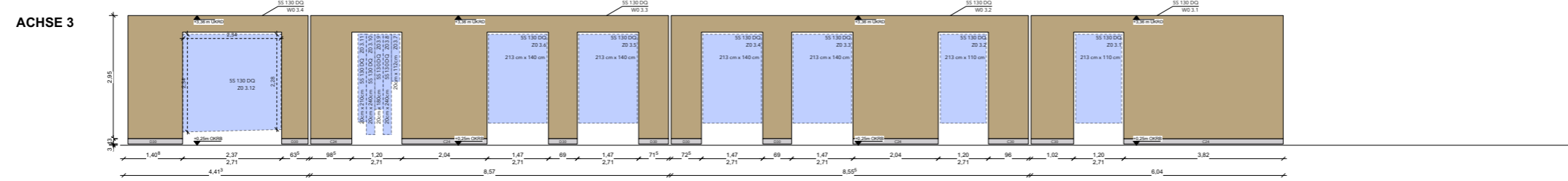
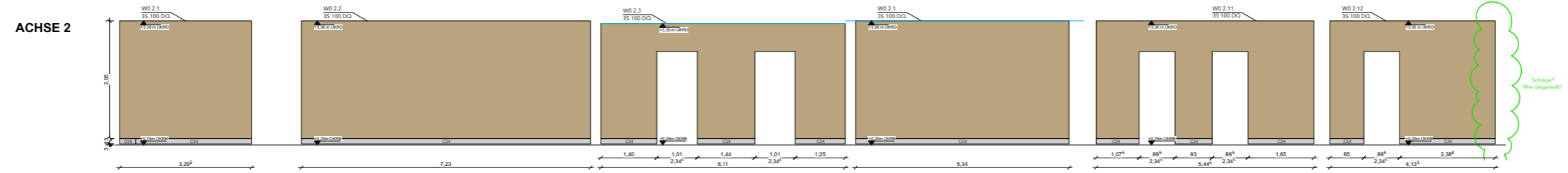
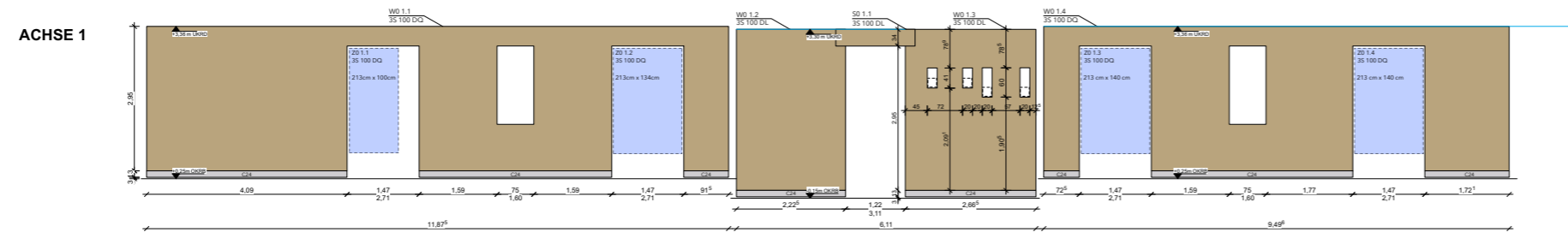


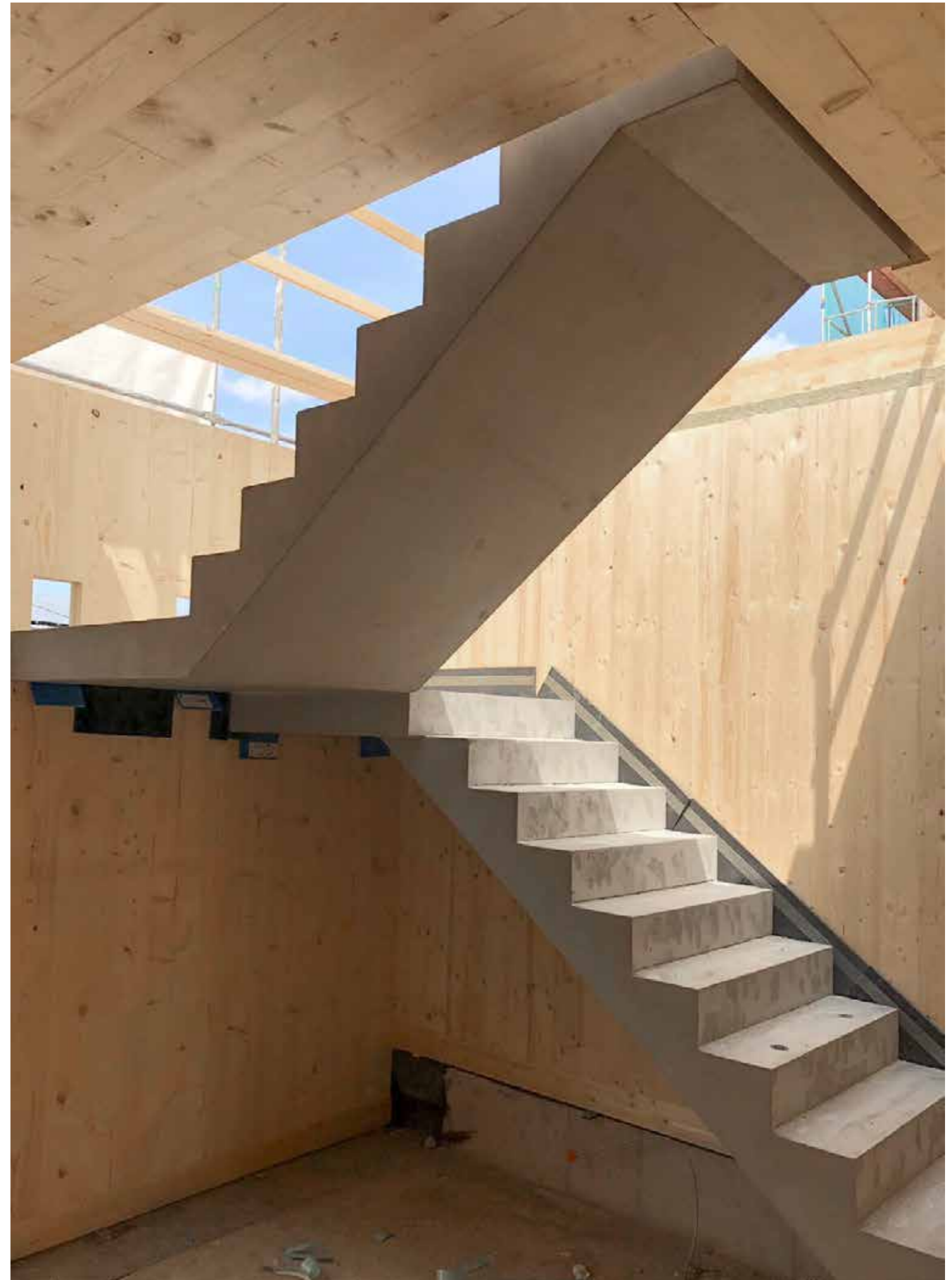


















VERBUNDFREIE FASSADE
MUSS NICHT TEURER SEIN

WOHNPROJEKT FLORA 86 2018

AUSSENWAND: KALKSANDSTEIN, WDVS
= 192 €/QM NETTO

Putz/Dispersionsspachtel: 14€/qm
Kalksandstein: 58€/qm
Mineralwolle + Dübel: 82€/qm
Armierung und Putz: 28€/qm
Zweifacher Anstrich: 10€/qm



MASSIVHOLZHÄUSER 2020

AUSSENWAND MASSIVHOLZ, HINTERLÜFTETE FASSADE = 190 €/QM NETTO

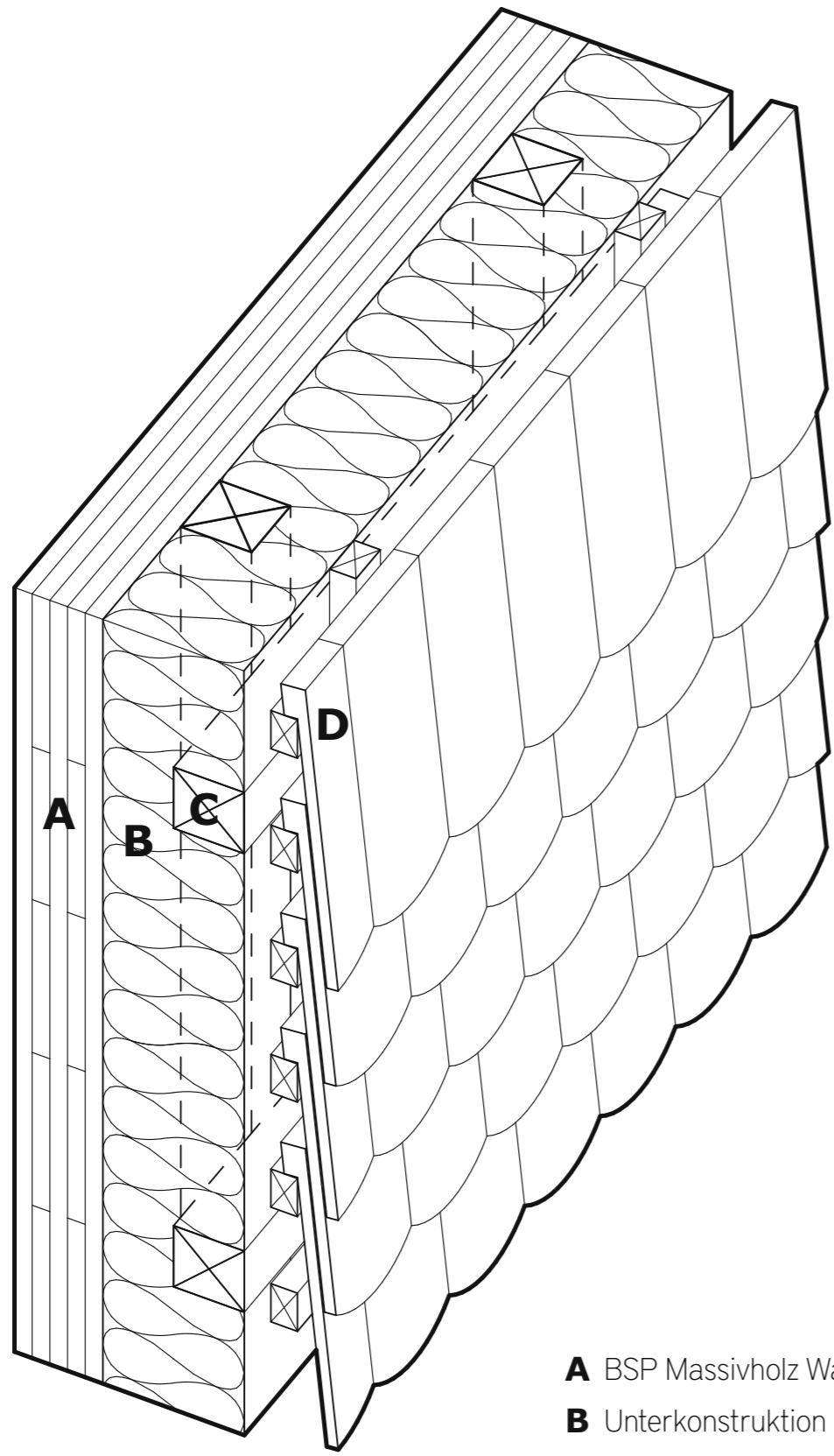
Gipskartonplatte, einlagig: 9€/qm
BSP-Massivholzplatten: 90€/qm
Mineralwolle: 21€/qm
Unterspannbahn: 7€/qm
Lattung, Konterlattung: 16€/qm
Biberschwanz: 47€/qm

wiederverwendbar

verbundstofffrei

weniger Gewerke

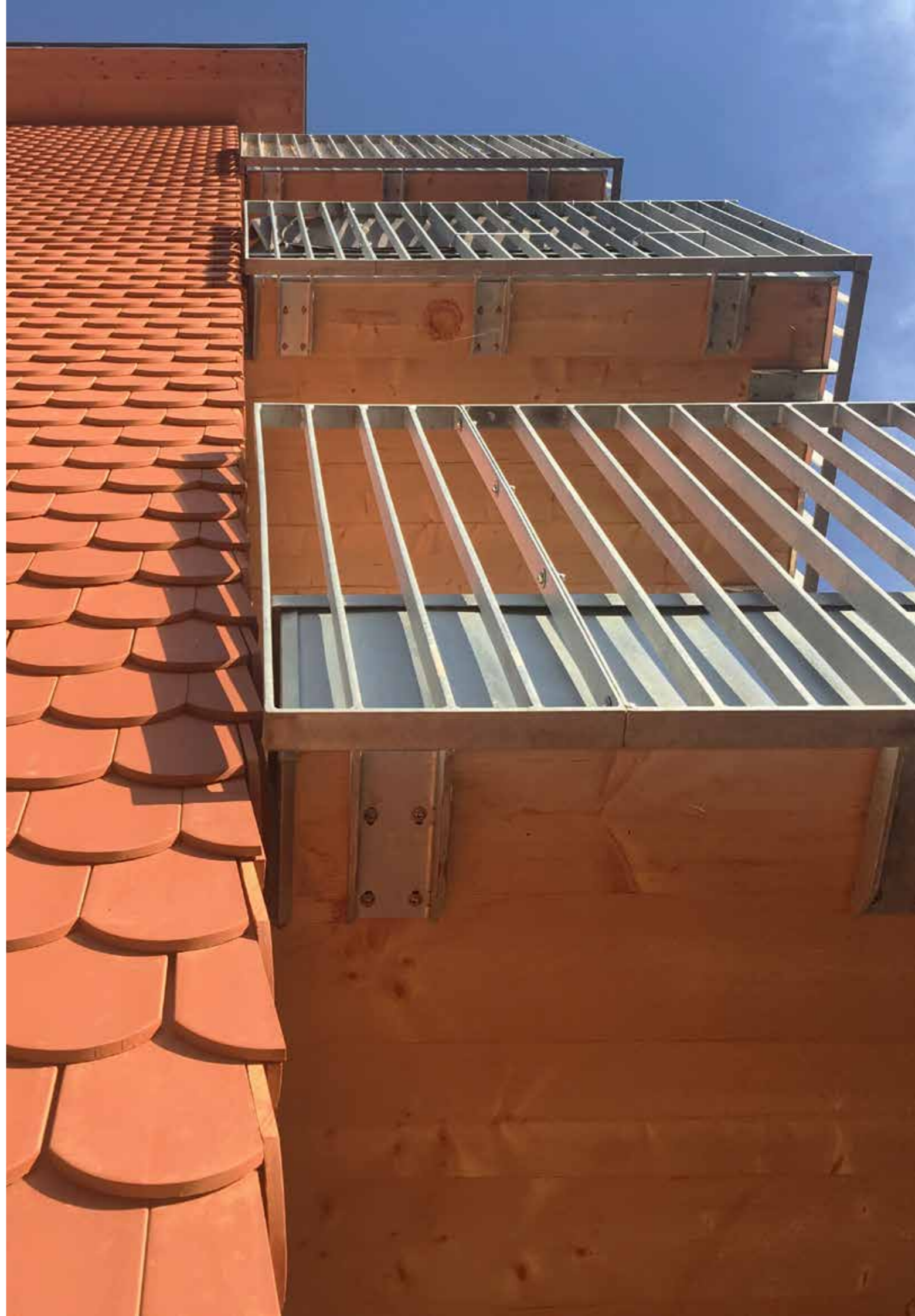
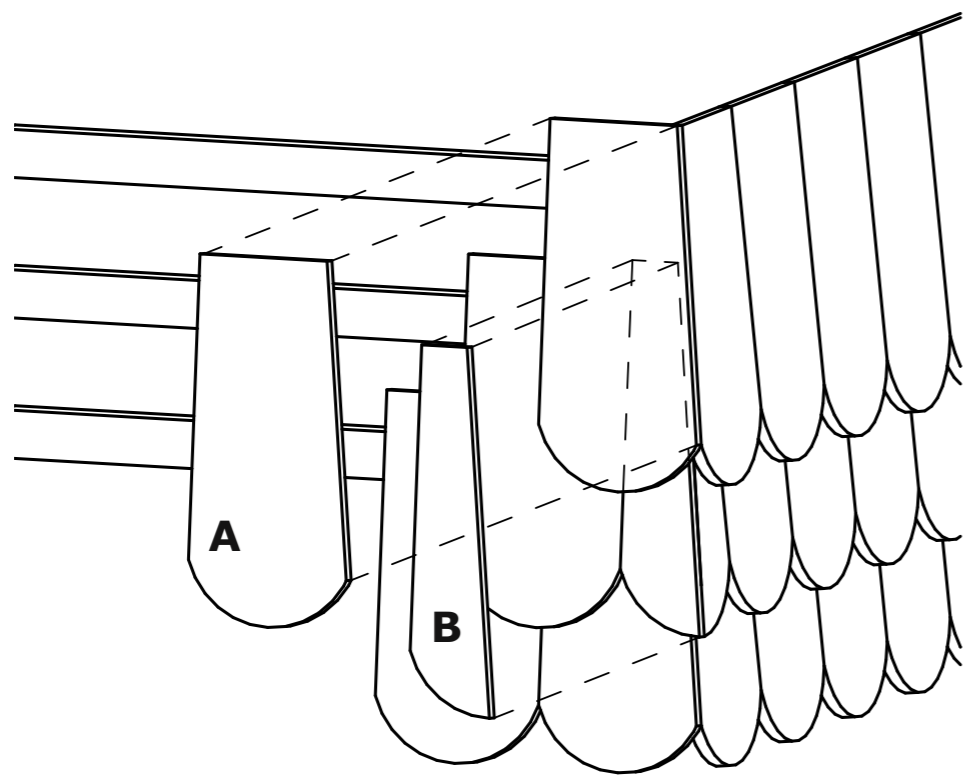
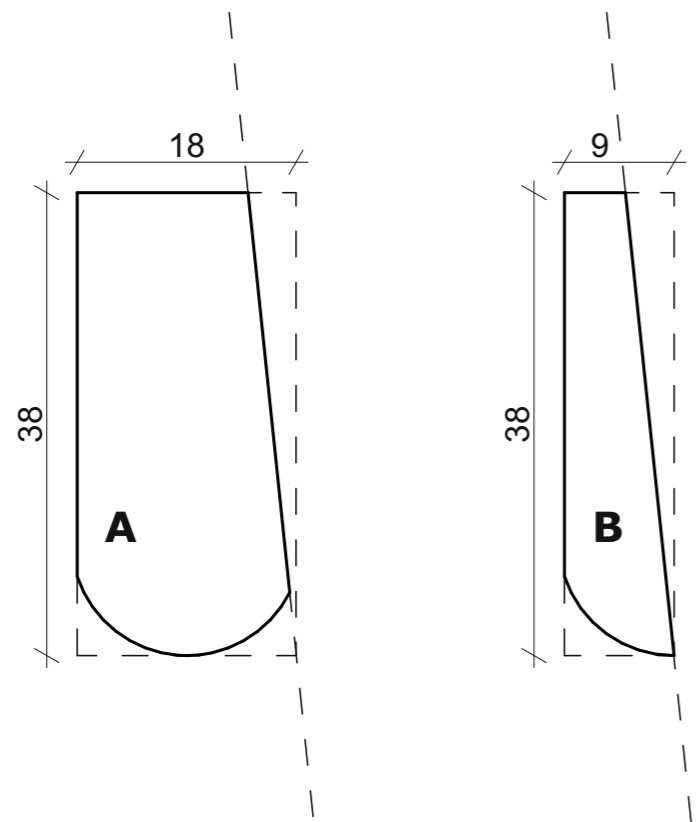
nicht teurer



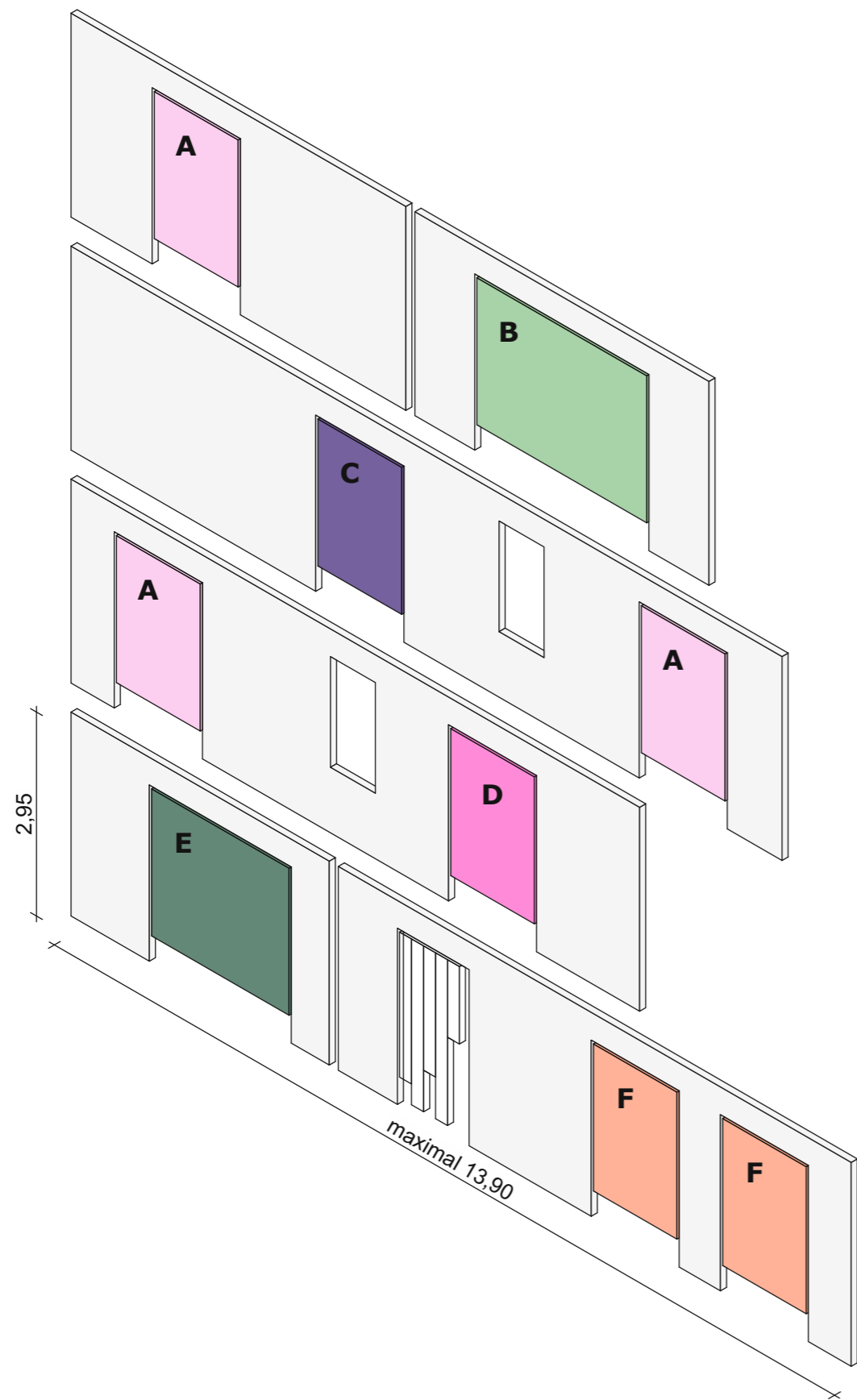
- A** BSP Massivholz Wandplatten
- B** Unterkonstruktion Fassade
- C** Lattung und Konterlattung
- D** Biberschwanzziegel

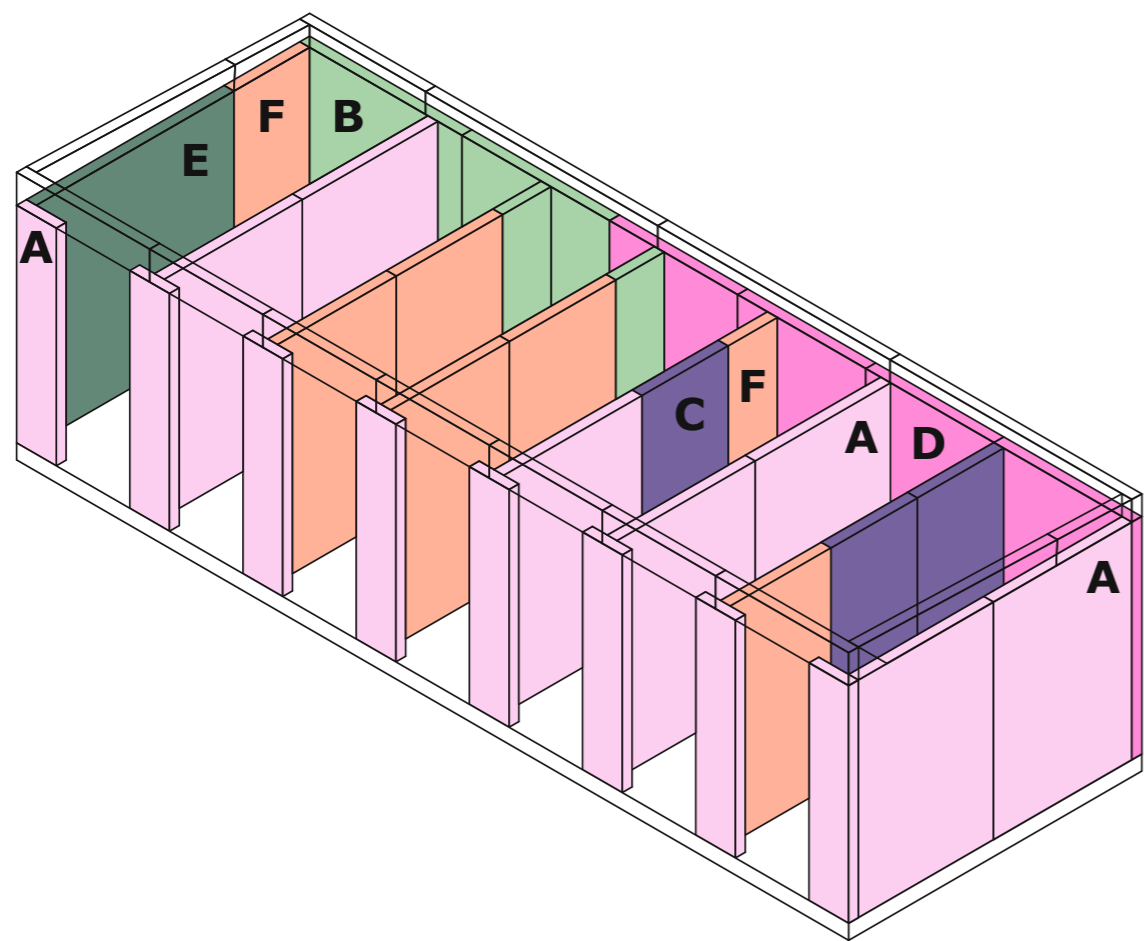




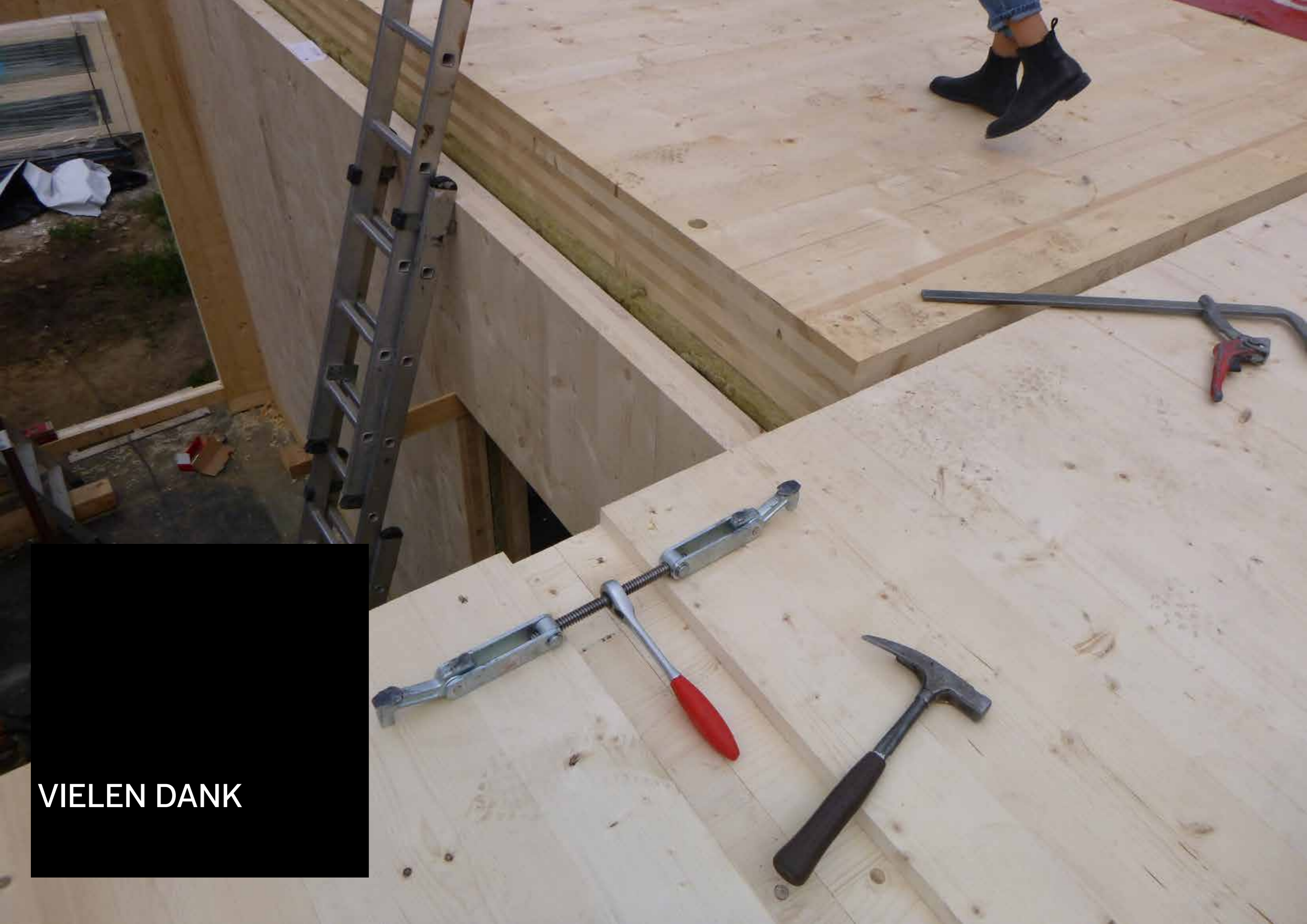












VIELEN DANK